

Industry Leader

ESI is the industry leader in Gasonics L3510 Plasma Ashers remanufacturing services. ESI has been providing unique innovative upgrades, cost-effective technical solutions, high quality equipment worldwide since 1986. All of our equipment goes through a series of rigorous full process tests which are documented, standardized, and certified by performance and reliability standards to ensure the highest quality. All our systems and sub systems are manufactured in the USA using all new parts. Our existing customers always come back to us because of the high quality and outstanding customer service we provide.

PLACE
STAMP
HERE



**PROVIDING SOLUTIONS FOR
PLASMA ASHER EQUIPMENT**

www.emi-semi.us

Our Mission

Our goal is to provide unique Innovation for Optimized Equipment Performance. We're dedicated to finding solutions that increase yield, improve uptime, reduce maintenance costs, lower overall cost of ownership and extend the life cycle of your equipment.



ESI

Austin TX. USA

Phone:

512-582-0622 office
1-800-338-0520 fax

Email:

sales@ESI-semi.com

ESI
Austin TX. USA

ESI Services

ESI is the industry leader in Asher remanufacturing services. ESI has been providing unique innovative upgrades, cost-effective technical solutions, high quality equipment worldwide since 1986. Supplying solutions for those who are faced with obsolete OEM components and parts that are no longer supported.

Why Choose ESI

- Leads industry in L3510 Support
- In the industry for over 29 years
- Systems exceed OEM Specifications
- Upgrades use Readily Available Parts
- IDX Flexware offered as an upgrade on all ESI systems

Gasonics & Matrix Remanufacturing

- Test & Qualification
- Process & Control Enhancements
- Advanced Process Control System
- IDX Flexware Process Control
- Electrical & Mechanical Upgrade
- Plumbing & Pneumatic Upgrade

Performance Specifications:

Rate: 0.5-1.5 $\mu\text{m}/\text{min}$ at 200 to 250 $^{\circ}\text{C}$, bulk strip.600 A/min at 100 $^{\circ}\text{C}$,
Descum Removal Uniformity: $<\pm 8\%$ (Max-Min) Strip, $<\pm 5\%$ (Max-Min)
Descum Temperature Control: 80-250 $^{\circ}\text{C}$ (± 2 $^{\circ}\text{C}$)

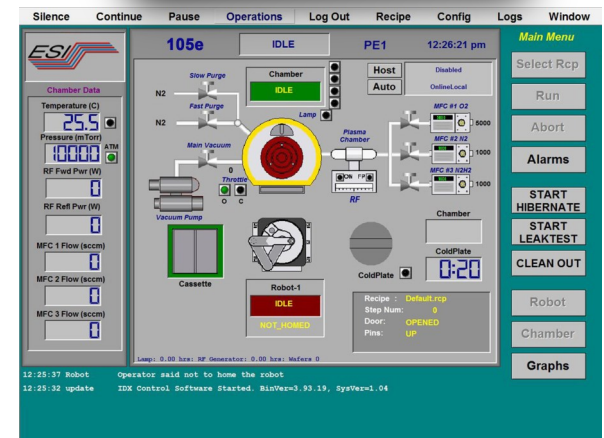
Setup for 75mm, 100mm, 125mm, 150mm Silicon or GaAs wafers.

Transfer 500 wafers using plasma process in our class100 cleanroom without errors

ESI 105e Asher

Features:

- IDX software with Secs/Gem, Windows 7 based Industrial Grade Embedded Intel Atom PC system with flash drive data storage Integrated UPS
- Industrial Grade ELO touchscreen
- Module I/O system attached to Embedded PC
- Integrated watchdog timers for safer operation
- Wafer Loading with Advanced Hine Hatm-5 pick and place 3-axis Robot, eliminates the need for the indexer
- Stationary Cassette
- New solid state temp controller system for heated chuck
- USB port for recipe and data transfer
- Upgraded Fast Match RF matching network.
- self-calibrates on power up
- Two gases standard with 5 LPM O2 and 1 LPM N2 MFCs (3rd MFC option available)
- No Obsolete parts
- No Custom PCBs
- MKS Throttle valve and Baratron
- 600W 13.56Mhz RF power
- Easy troubleshooting with LED status on I/O blocks and software display of all I/O status
- Password protection for multiple levels
- Processes and size compatible with the Matrix 105 Asher



IDX Flexware Control